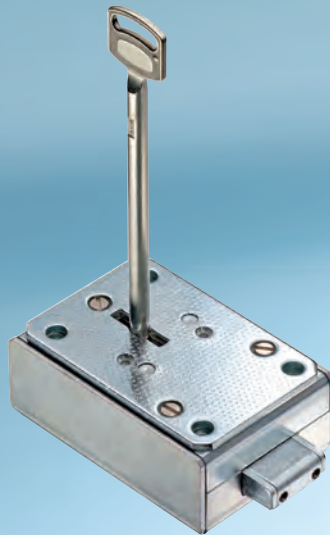
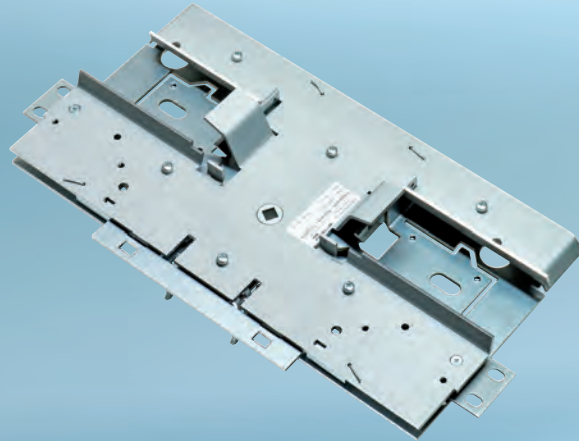


Product Overview



The security programme of Wittkopp:

- Electronic locks
- Biometric systems
- Hotel and cabinet locks
- Actuators
- Key locks
- Safe deposit locks
- Boltworks
- Accessories

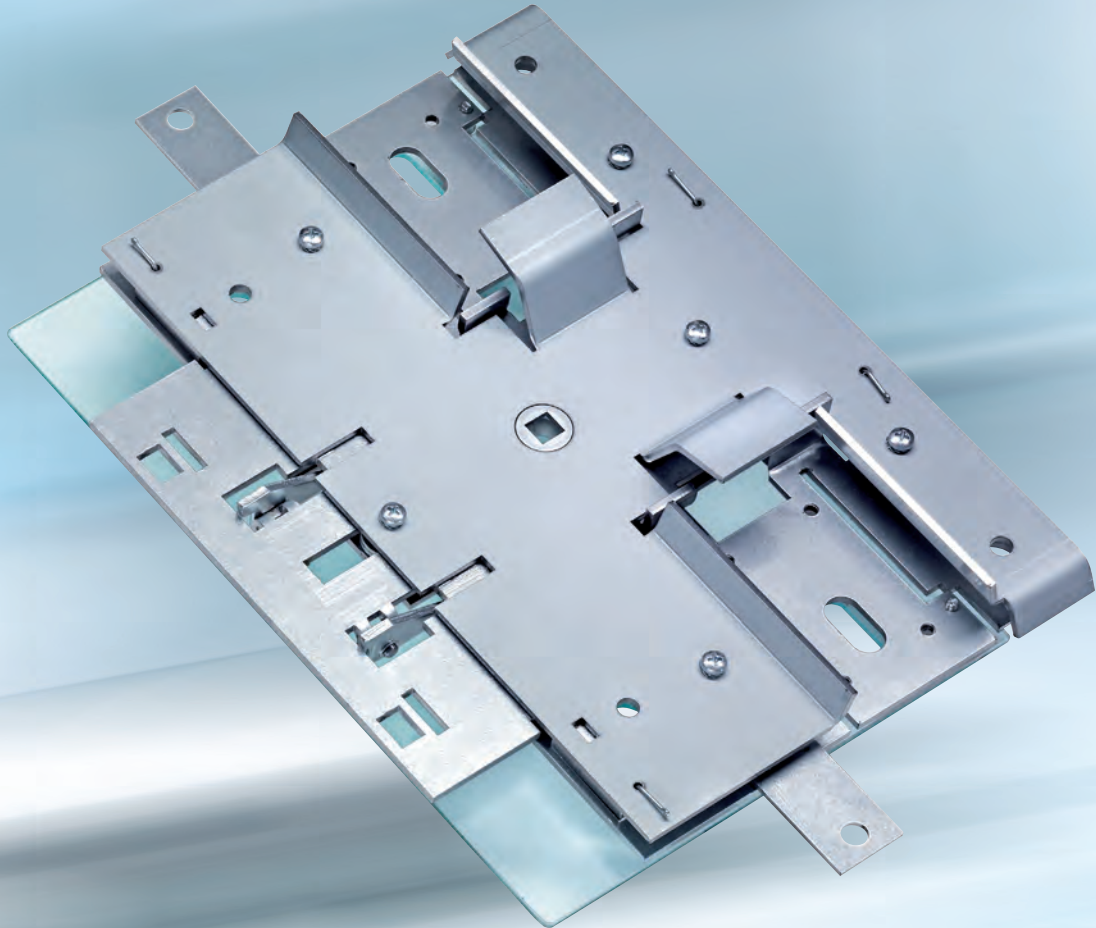
Carl Wittkopp GmbH
Konrad-Zuse-Straße 5
42551 Velbert
Germany

Telephone +49(0)2051 9566 0
Telefax +49(0)2051 9566 66
info@carl-wittkopp.com
www.carl-wittkopp.com



WITTKOPP -
high-security locks since 1857

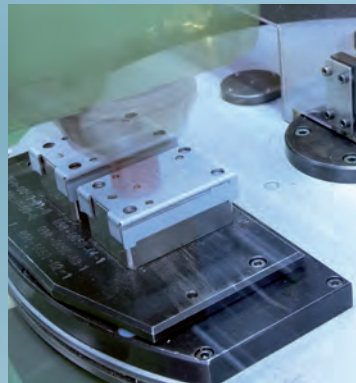
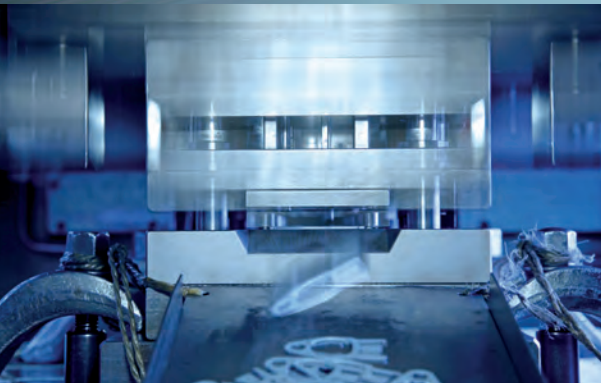
Boltworks



High-security
by competence

The Company

The need to safeguard and protect cash and valuables has existed since time immemorial. This can be achieved only with security concepts that are worked out right down to the very last detail, applying both vast experience and innovative prowess. Wittkopp high-security locks are the answer. Our boltworks, used in conjunction with our locks – either mechanical or electronic – satisfy all the safety and security specifications put forth by the safe and vault industry.



Wittkopp high-security locks have been developed and manufactured ever since 1857 in Velbert, a town long renowned for its activities in this specific branch of industry. Right down to the present day the mechanical tradition upon which Carl Wittkopp GmbH was built continues to be the basis for confidence in our products. As always, our solutions convince users whenever there is a demand for security paired with unwavering quality and long service lives.

Our development standards - To your advantage

Mechanical precision is based on careful development and production work. Our products, their quality certified by certification bodies, today pass through a highly modern development process. In that process our technical specialists continuously integrate the latest security industry requirements into the locks. Closeness to our custo-

mers – both geographically and in our ways of thinking – is the wellspring for economical and reliable high-security concepts. Patented Wittkopp designs devolve from intensive communications and closeness to the customer. We don't deliver security "off the rack". Instead we supply concepts tailored to your specific needs.

Boltworks

Wittkopp boltworks offer maximum protection against tampering. These mechanical masterpieces transfer directly to the door the forces involved in any ingress attempt. They utilize a superior concept for force deflection. Not only is weight reduced. At the same time the boltworks facilitate both maintenance and the manufacturing process for safes and for vault doors.



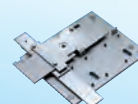
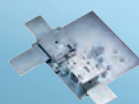
Opening and closing - Quality by Wittkopp

Whenever it is a matter of securing money and other valuables, it's not just the quality of the enclosure that is important. The opening and closing concepts are equally significant. Uniform, trouble-free mechanical operation is a function of high-quality fittings, selecting the proper materials and perfect manufacturing quality.

Wittkopp boltworks combine all these important criteria. This is rewarded by the decades of trust that customers have placed in our products.

Our supply range includes boltworks in various sizes, with a diversity of lock mechanisms and lock fittings. Wittkopp boltworks are perfect for use in combination with Wittkopp high-security locks. It will be most worth your while to obtain full information on our line of mechanical and electronic locks and the associated accessories.

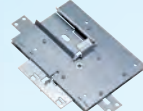
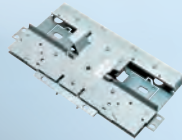
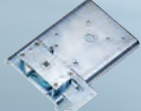
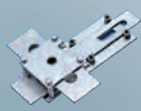
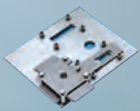
Product Overview



Features	7604	7617	7618/7628	7619/7629
Installation dimensions, closed (mm)	463 x 420	175 x 215	297 x 269 297 x 318	298 x 220 298 x 242
Fixing	welded	welded	welded	welded
Blocking	3-sided	4-sided	3-sided 4-sided	3-sided 4-sided
Stroke - main shaft/vertical shafts (mm)	28/28	20/20	20/20	20/20
Square nut (mm)	8/11	8	8/11	8/11
Hinges at	right left	right	right left	right left
Suitable for emergency lock system		•	•	
Lock - number	2	1	2	1
Lock - footprint	standard	standard	standard	standard
Lock - fixing	M6	M6	M6	M6
Protection against tampering				
Anti-drilling plate			•	•
Lead plate	•			
Safety glass panel required				
Relocker - number				
Page	8	10	12	14

Features

Cawi boltworks are defined by way of the location of the hinges for the safe or other high-strength container. If the hinges are on the left side of the safe (when looking at the outside of the safe, from the front), then a left-hand boltworks mechanism is required. If, on the contrary, the hinges are located on the right, then a right-hand boltworks mechanism is required.



7626	7627	7630	7637	7638	7639
206 x 220	153 x 215 153 x 285	172 x 137	566 x 283	422 x 264	392 x 274
welded	welded	welded	screwed	screwed	screwed
4-sided	3-sided 4-sided	1-sided	1-sided 3-sided	1-sided 3-sided	1-sided 3-sided
20/20	20/20	20	26/26 35/35	30/26	26/26
8	8	7	8/11	8/11	8/11
right	right	right	right left	right	right
•	•				
1	1	1	1/2	1/2	1
standard	standard	standard	standard	standard	standard
M5	M5	M6	M6	M6	M6
	•				
		•			
			•	•	•
			4/6/8/10	4	4
16	18	20	22	24	26

Opening direction for safe door



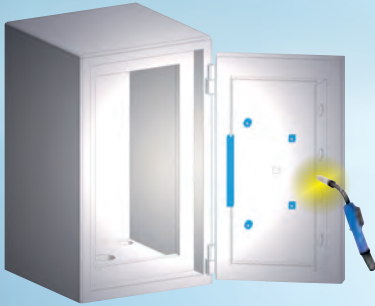
Hinges at left = Left-hand boltwork



Hinges at right = Right-hand boltwork

Installation Instructions Boltworks 7637 -7639

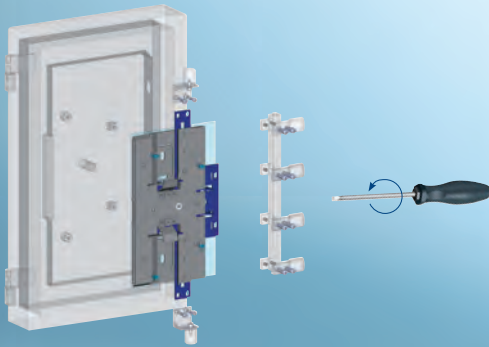
1.



2.



3.



4.



Advantages

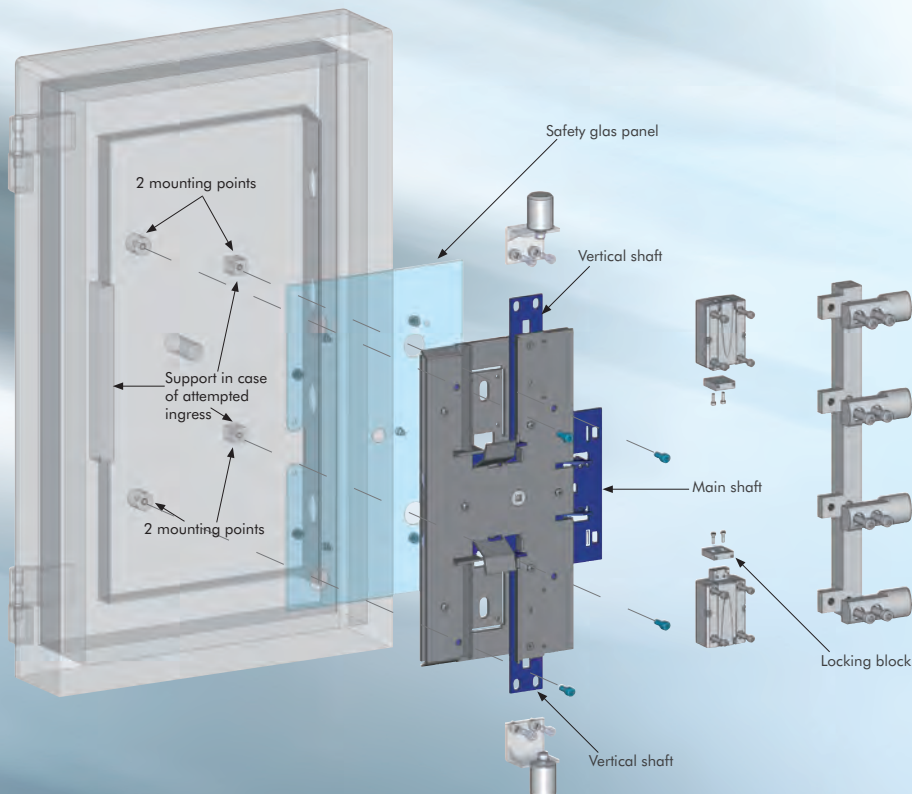
- Relockers integrated into the boltworks, eliminating any need to install a separate emergency lock-out feature
- Additional protection against tampering by single-pane safety glass
- If ingress is attempted, emergency hammers destroy the pane of safety glass and the relockers are activated
- Using an integrated pane of safety glass eliminates the need for a wire cable
- Pane of safety glass may reduce the need for reinforcing the safe.
- Lock and square nut secured against jimmying
- Ease of assembly and mounting and low weight

Manufacturing sequence

The manufacturing sequence can be significantly simplified since the safe itself can be painted before mounting the boltworks.

1. Weld the abutments at the attachment points
2. Paint the safe
3. Bolt the boltworks to the door
4. Complete work on the safe

Unique force diversion principle



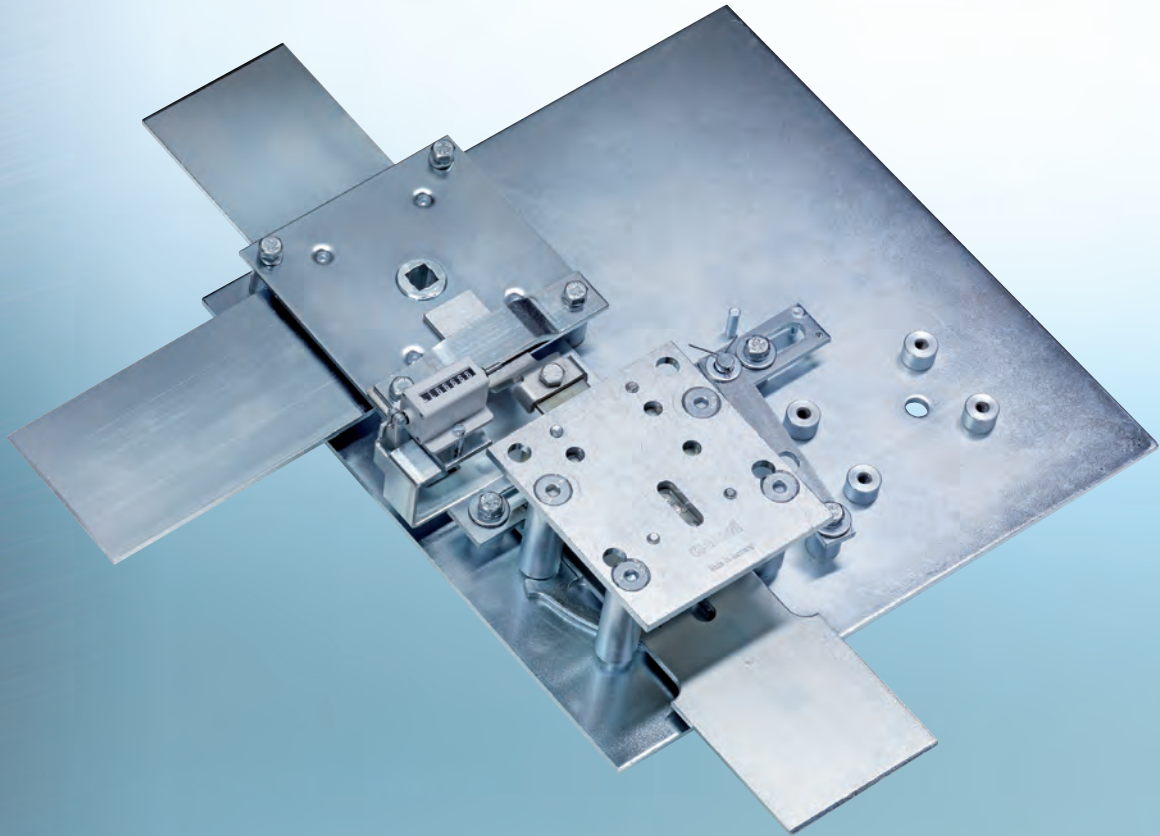
Five abutments are attached to the door and used both to secure the boltwork and to divert force to the door of the safe. Four of these serve as mounting points.

The fifth abutment (bar) serves to support the boltwork and to divert force to the door of the safe.

The boltwork is attached to the mounting points using four size M8 screws.

The main vertical shaft attachment points are designed to take M10 screws.

Boltwork 7604

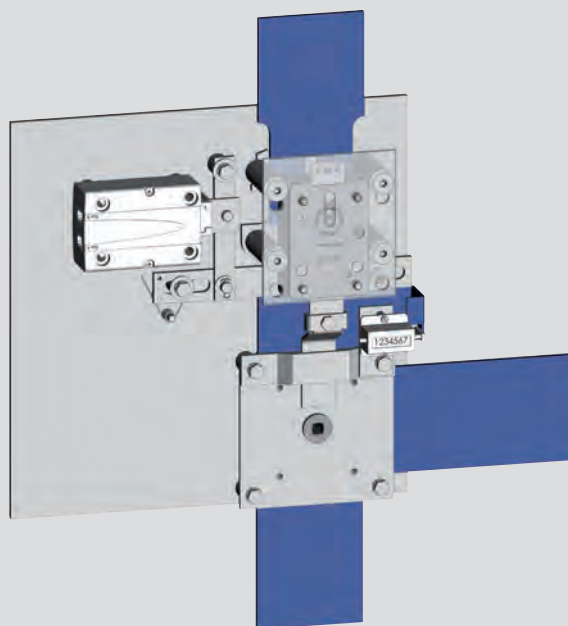


■ Certifications

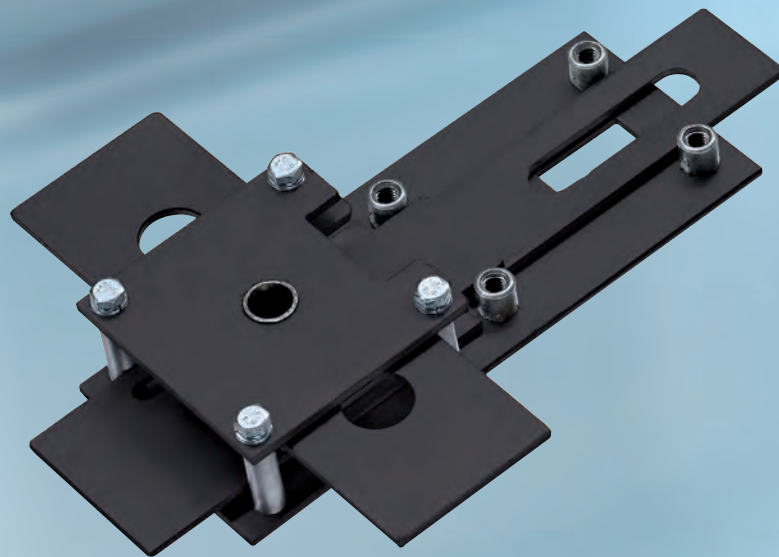
- BSI approval for type VS steel cabinets and VS enhanced-security doors

■ Application range

- Safes and vault doors

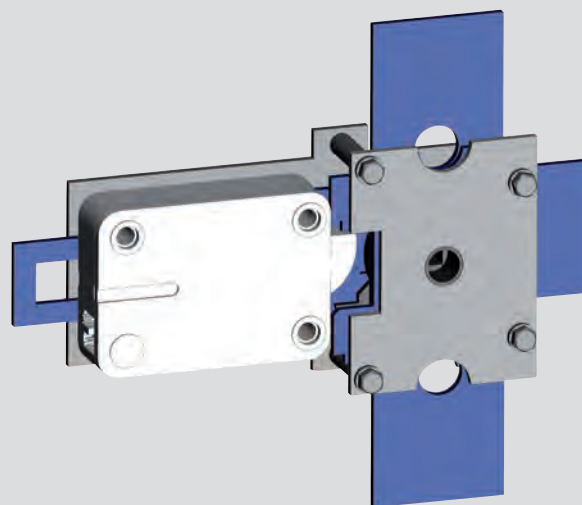


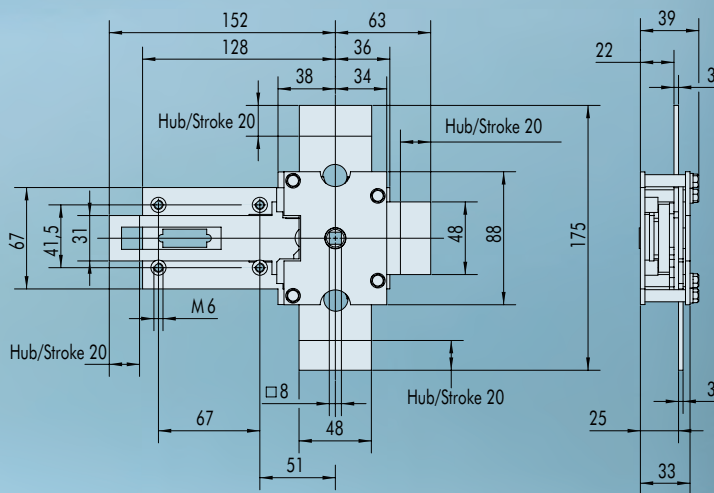
Boltwork 7617



■ Application range

- Gun cabinets
- Document safes
- Steel cabinets
- Safes up to resistance grade EN 1143-1 grade I





Characteristics

- 4-sided boltwork for single lock operation

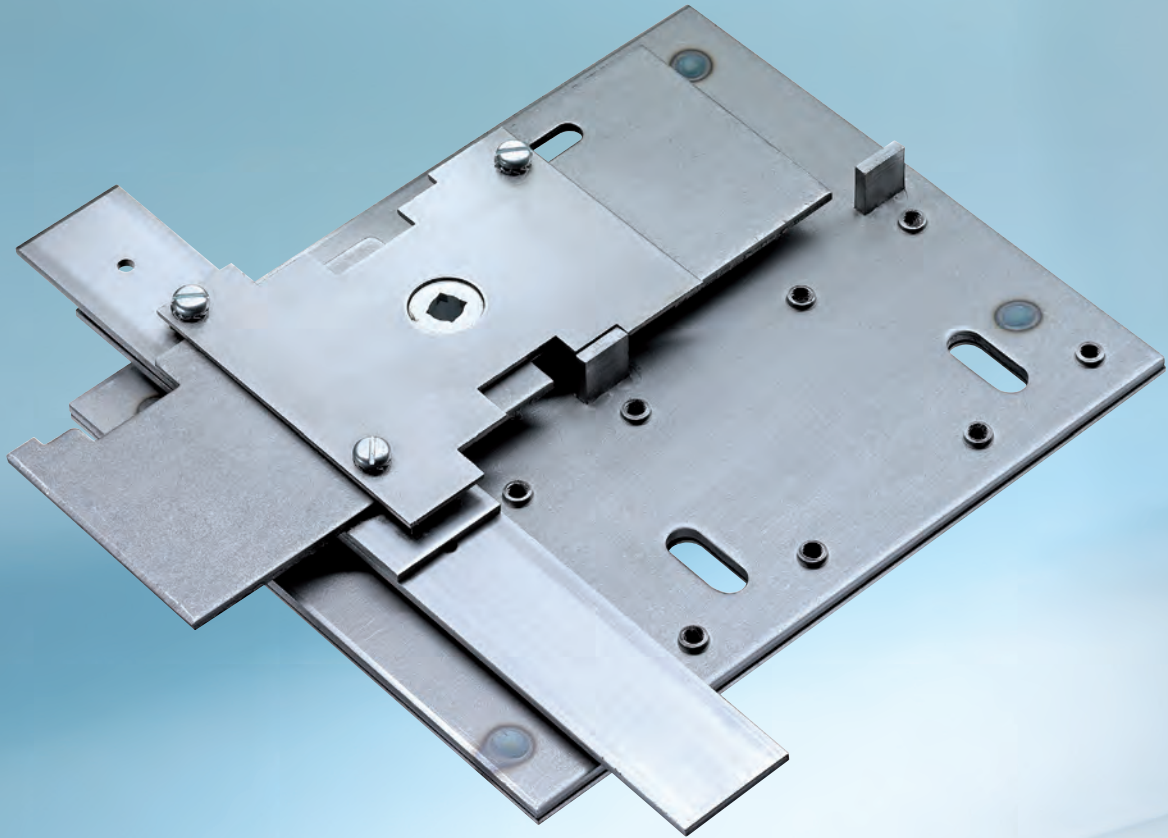
Features

- Suitable for locks with swing bolt

View of inside of door M 1:5

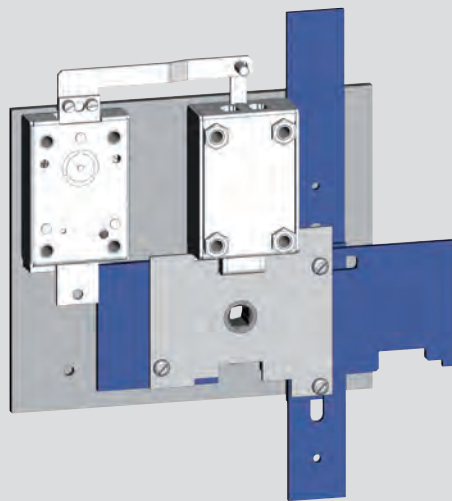
Technical characteristics	7617
Installation dimensions, closed (mm)	175 x 215
Fixing	welded
Blocking	4-sided
Stroke - main shaft/vertical shafts (mm)	20/20
Square nut (mm)	8
Hinges at	right
Lock - number	1
Lock - footprint	standard
Lock - fixing	M6
Weight (kg)	1.0

Boltwork 7618/7628

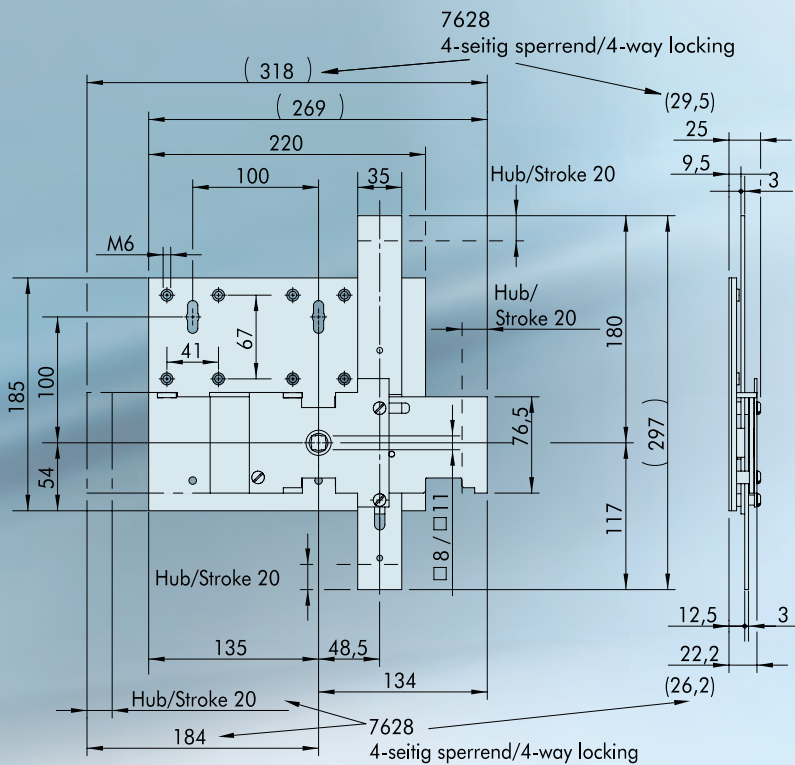


■ Application range

- Safes
- Money changers
- ATMs
- High-strength containers
up to resistance grade
EN 1143-1 grade III



Boltwork 7618 with emergency lock system



Boltwork 7618 View of inside of door M 1:6

Characteristics

- 3-sided (7618) or 4-sided (7628) boltwork for 2-lock operation
- No predefined operation sequence

Features

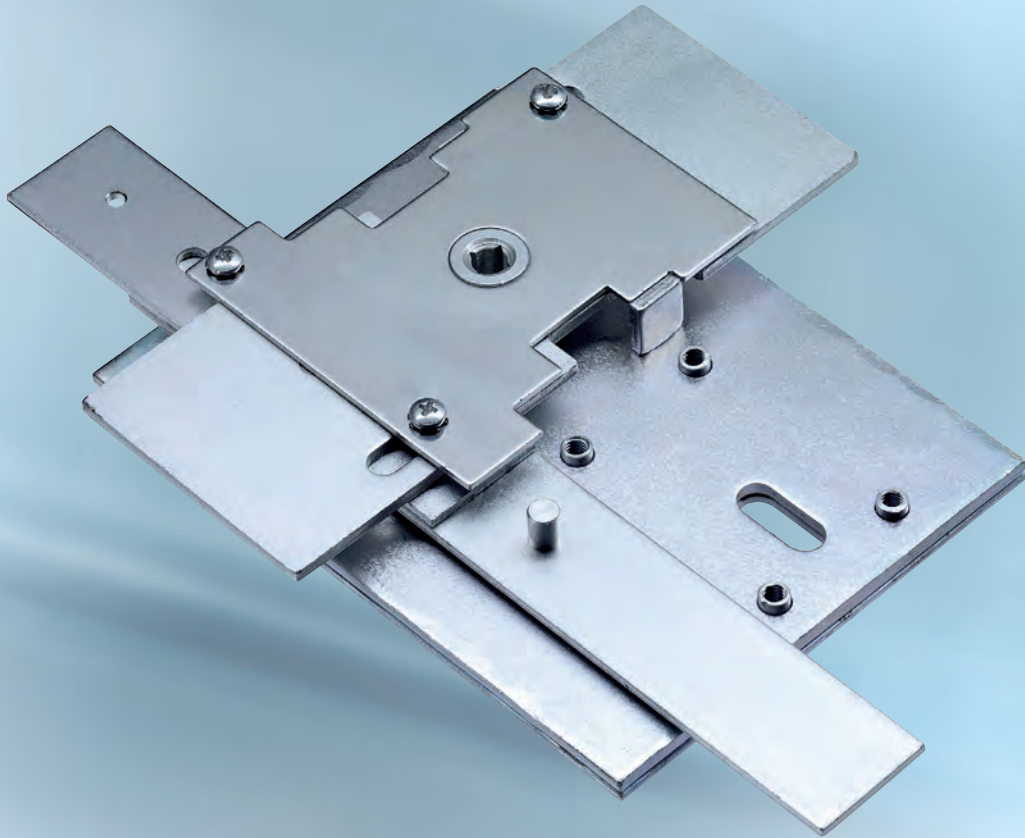
- Boltwork 7618 with emergency key lock system: Additional key lock to the electronic lock. Thus, in an emergency mechanical opening possible
- Additional protection against tampering with optional anti-drilling plate made of manganese steel
- Main and vertical shafts available in different lengths

Technical characteristics	7618	7628	Options
Installation dimensions, closed (mm)	297 x 269	297 x 318	
Fixing	welded	welded	
Blocking	3-sided	4-sided	
Stroke - main shaft/vertical shafts (mm)	20/20	20/20	
Square nut (mm)	8	8	11
Hinges at	right	right	left
Suitable for emergency lock system	•		
Lock - number	2	2	
Lock - footprint	standard	standard	
Lock - fixing	M6	M6	
Weight (kg)	2.8	3.2	

Protection against tampering

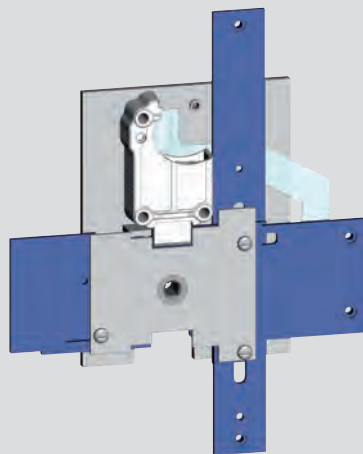
Anti-drilling plate (mm) 220 x 185 x 2

Boltwork 7619/7629

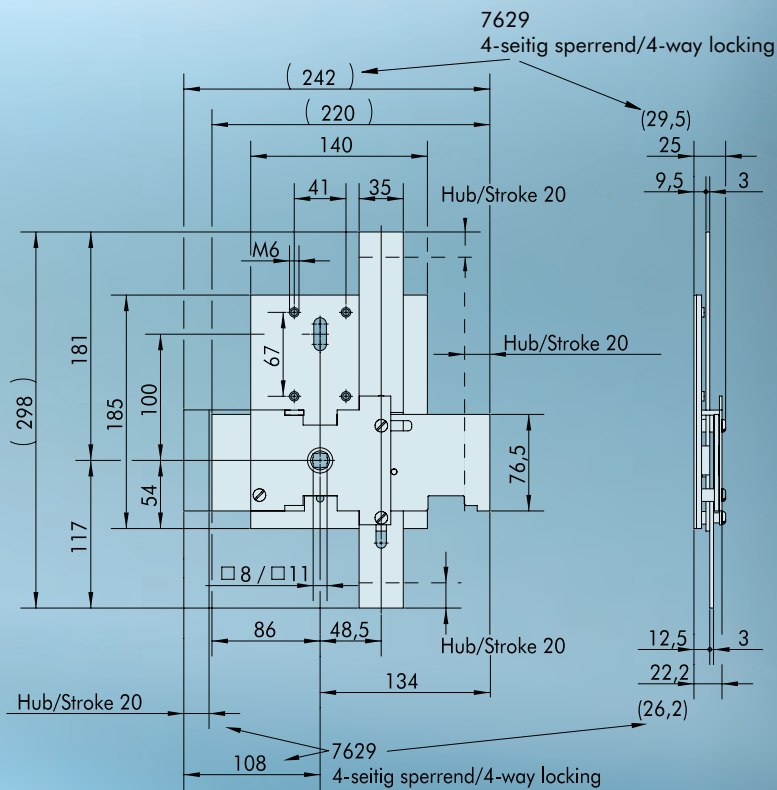


■ Application range

- Safes
- Money changers
- ATMs
- High-strength containers
up to resistance grade
EN 1143-1 grade III



Boltwork 7629 with keyhole cover



Boltwork 7619 View of inside of door M 1:6

Characteristics

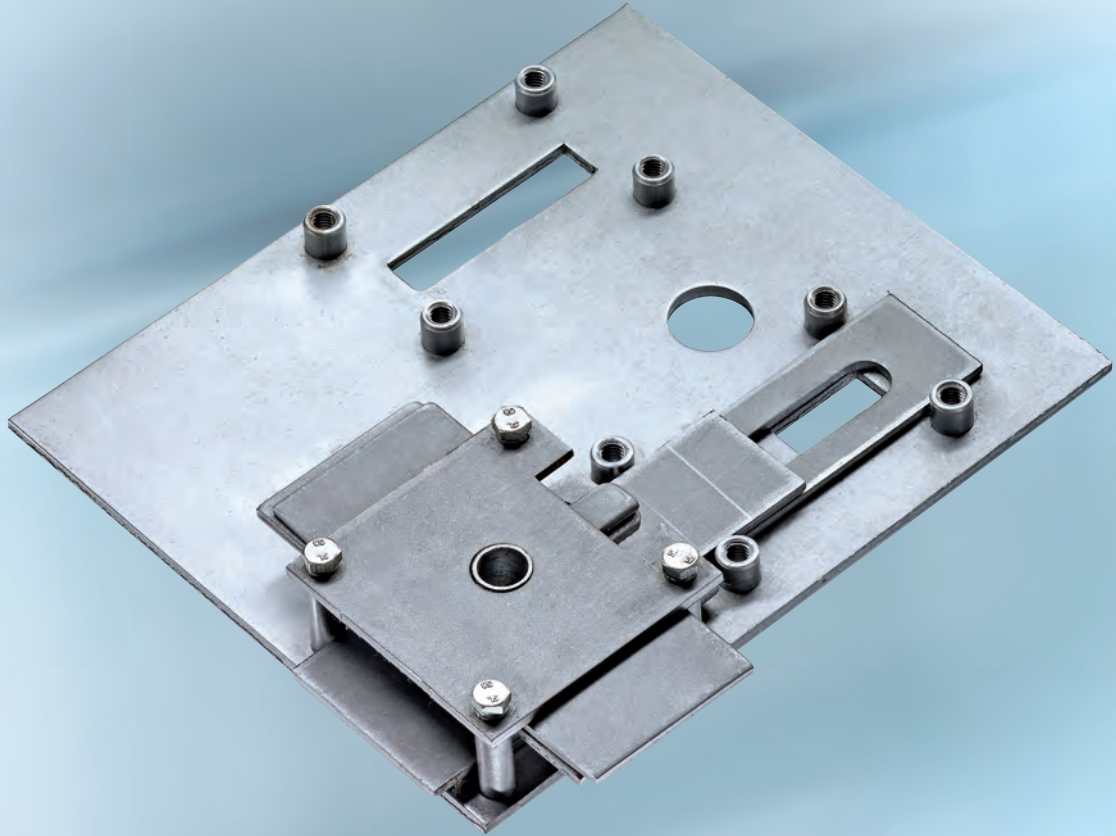
- 3-sided (7619) or 4-sided (7629) boltwork for single lock operation
- No predefined operation sequence

Features

- Additional protection against tampering with optional anti-drilling plate made of manganese steel
- Alternatively, keyhole cover for boltwork 7629 - ideal for equipment of e.g. slot machines
- Main and vertical shafts available in different lengths

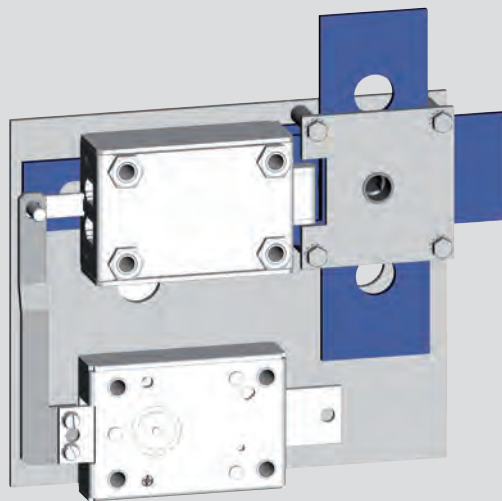
Technical characteristics	7619	7629	Options
Installation dimensions, closed (mm)	298 x 220	298 x 242	
Fixing	welded	welded	
Blocking	3-sided	4-sided	
Stroke - main shaft/vertical shafts (mm)	20/20	20/20	
Square nut (mm)	8	8	11
Hinges at	right	right	left
Lock - number	1	1	
Lock - footprint	standard	standard	
Lock - fixing	M6	M6	
Weight (kg)	2.1	2.5	
Protection against tampering			
Anti-drilling plate (mm)			140 x 185 x 2
Keyhole cover (7629)			•

Boltwork 7626



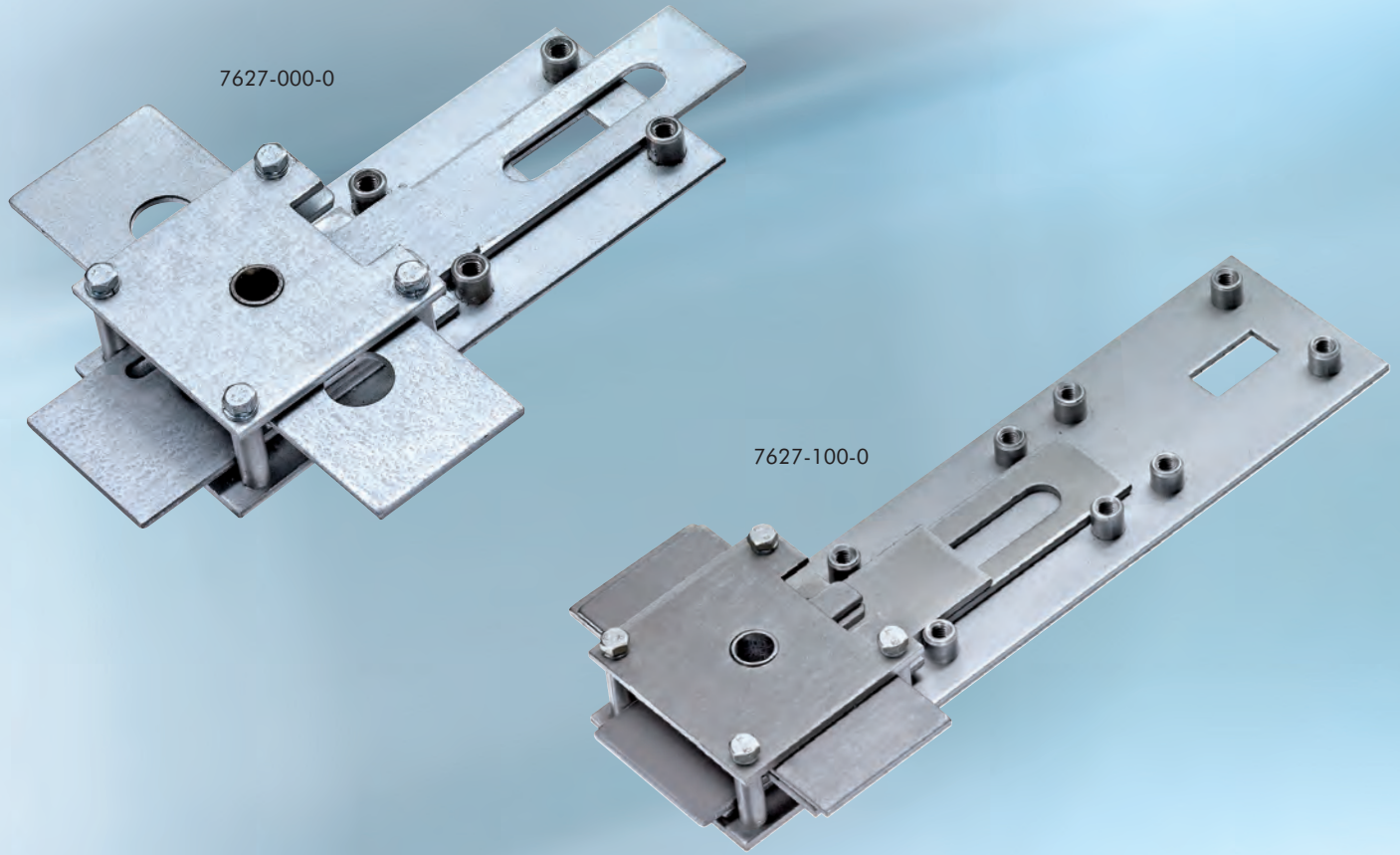
■ Application range

- Gun cabinets
- Document safes
- Steel cabinets
- Safes up to resistance grade EN 1143-1 grade I



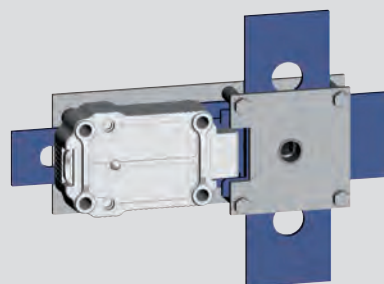
Boltwork 7626 with emergency lock system

Boltwork 7627

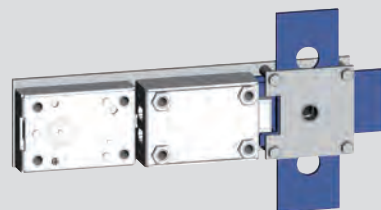


Application range

- Gun cabinets
- Document safes
- Steel cabinets
- Safes up to resistance grade EN 1143-1 grade I

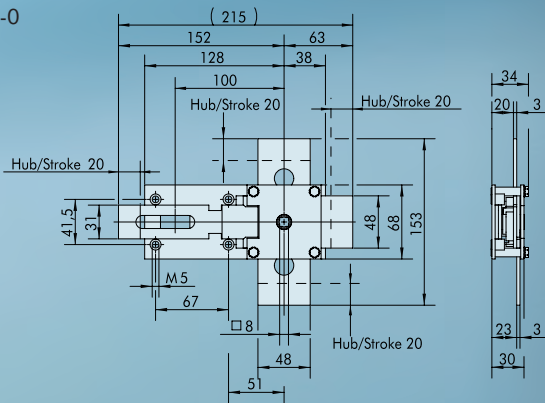


Boltwork 7627-000-0

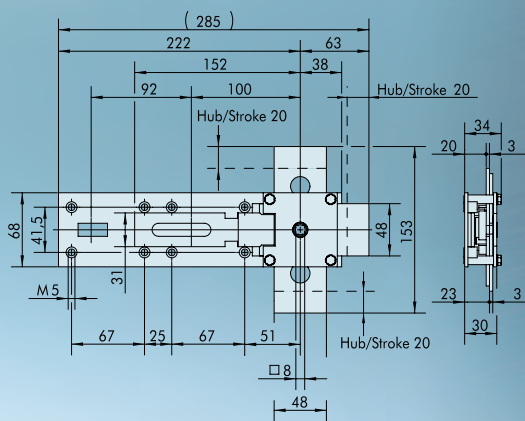


Boltwork 7627-100-0 with emergency lock system

Boltwork 7627-000-0



Boltwork 7627-100-0



View of inside of door M 1:7

Characteristics

- 3-sided or 4-sided boltwork for single lock operation

Features

- Extension of the 3-sided boltwork to a 2-lock operation when the emergency lock system is used: Addition of a key lock to the electronic lock. Thus, in an emergency mechanical opening possible
- Additional protection against tampering with optional anti-drilling plate made of manganese steel

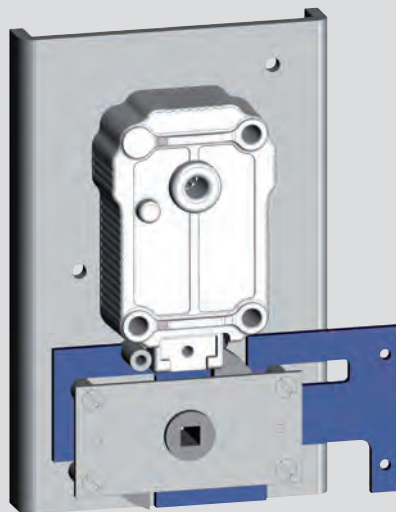
Technical characteristics	7627-000-0	7627-100-0	Options
Installation dimensions, closed (mm)	153 x 215	153 x 285	
Fixing	welded	welded	
Blocking	4-sided	3-sided	
Stroke - main shaft/vertical shafts (mm)	20/20	20/20	
Square nut (mm)	8	8	
Hinges at	right	right	
Suitable for emergency lock system		•	
Lock - number	1	1 + emergency lock	
Lock - footprint	standard	standard	
Lock - fixing	M5	M5	
Weight (kg)	1.0	1.1	
Protection against tampering			
Anti-drilling plate for 7627-000-0 (mm)			166 x 68 x 2

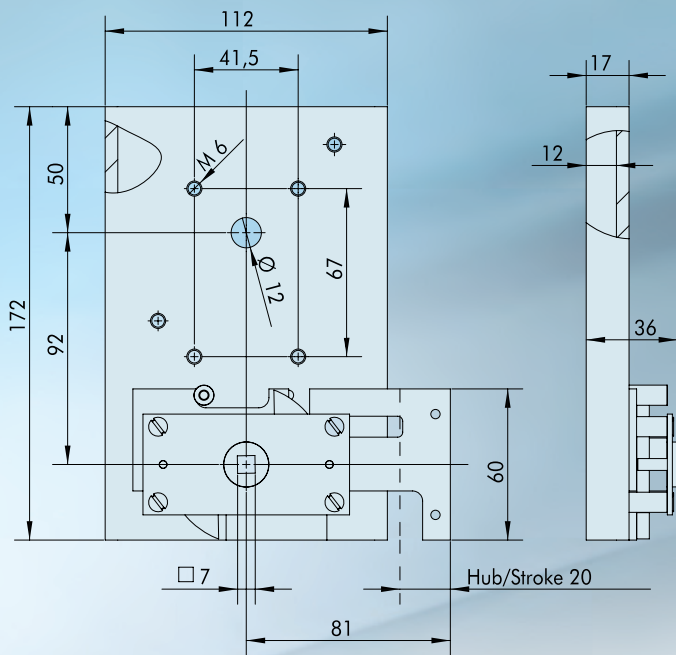
Boltwork 7630



■ Application range

- Key safes
- Furniture safes
- Medical cabinets
- Small safes





View of inside of door M 1:3

Characteristics

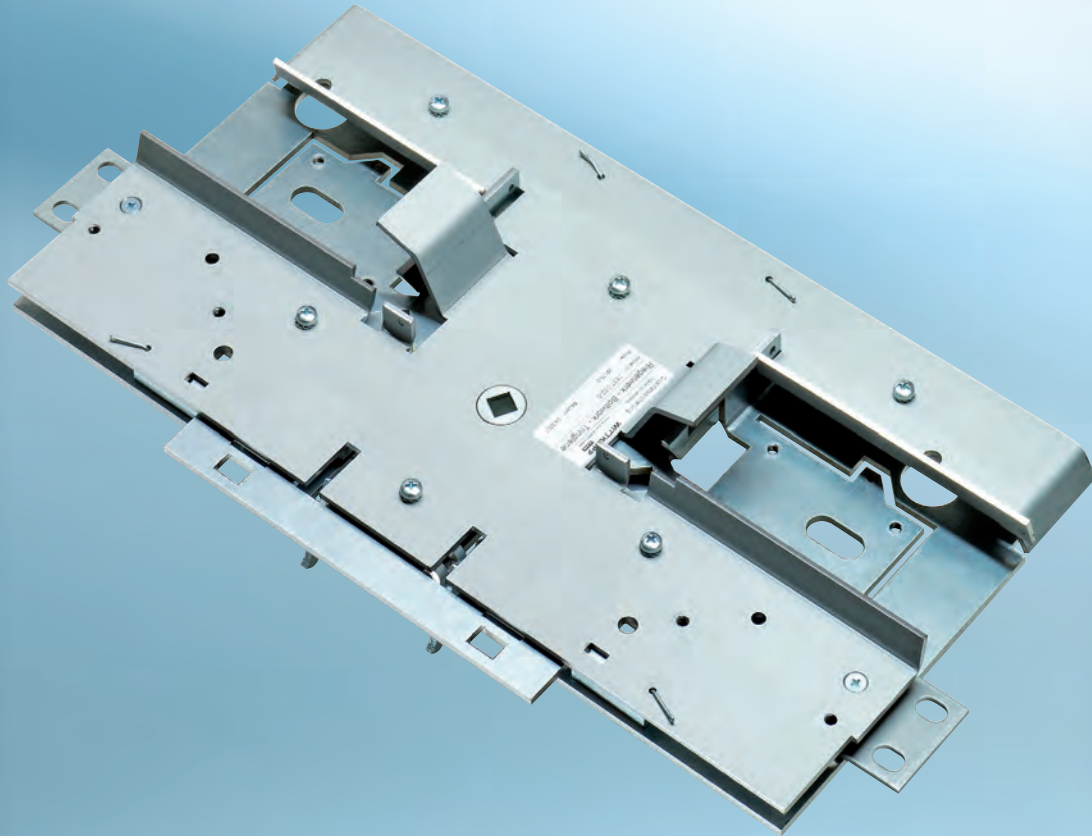
- 1-sided boltwork for single lock operation
- Intended for use with 1 mechanical combination lock or 1 electronic lock

Features

- Additional protection against tampering with optional lead plate - reading of the set combination not possible by means of X-rays

Technical characteristics	7630	Options
Installation dimensions, closed (mm)	172 x 137	
Fixing	welded	
Blocking	1-sided	
Stroke - main shaft (mm)	20	
Square nut (mm)	7	
Hinges at	right	
Lock - number	1	
Lock - footprint	standard	
Lock - fixing	M6	
Weight (kg)	1.1	
Protection against tampering		
Lead plate (mm)		100 x 100 x 10

Boltwork 7637

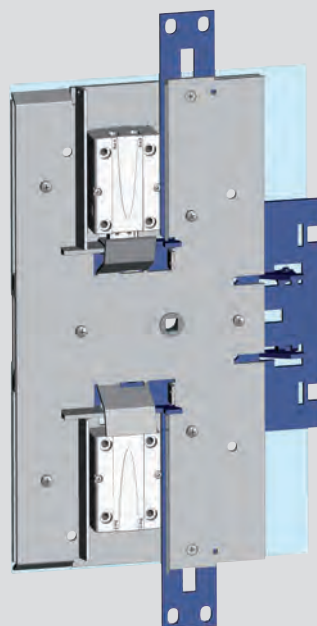


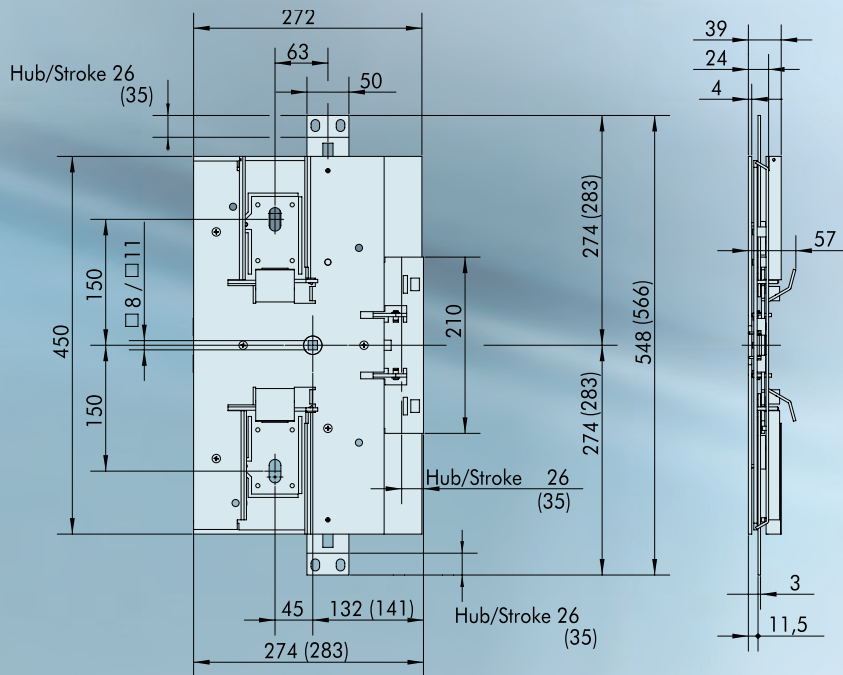
■ Certifications

- BSI approval for type VS steel cabinets and VS enhanced-security doors

■ Application range

- ATMs
- Cash recyclers
- Deposit systems
- Safes in compact design and vault doors up to resistance grade EN 1143-1 grade VII





View of inside of door M 1:9

Characteristics

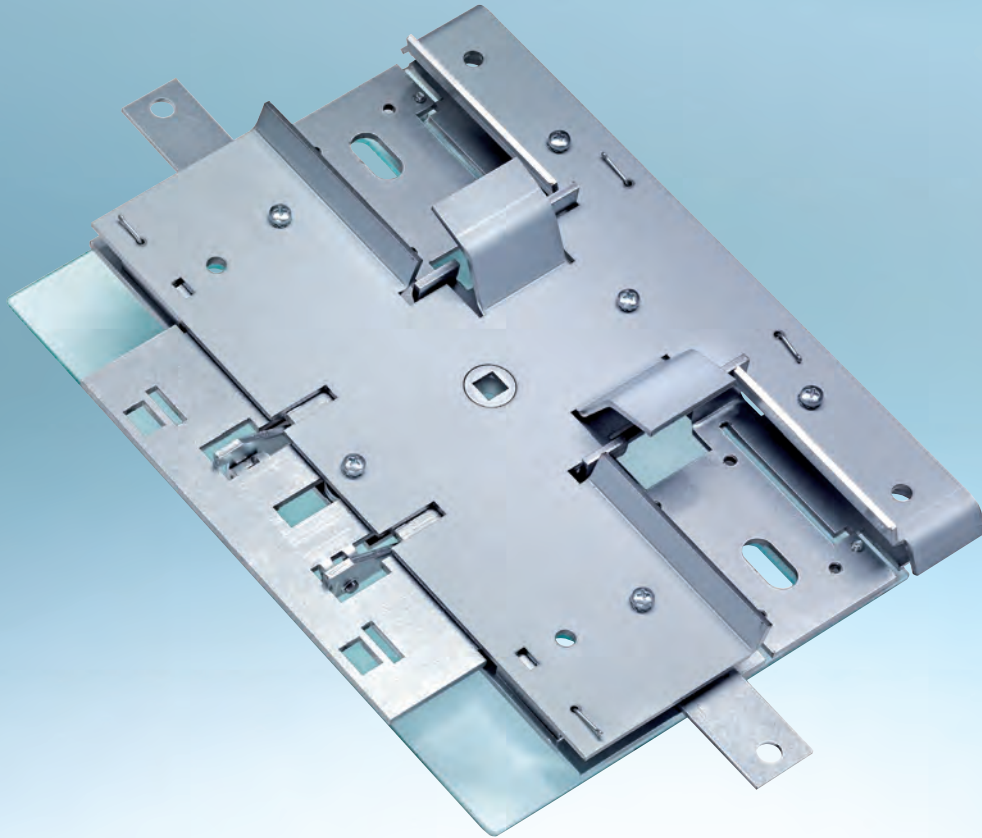
- 1-sided or 3-sided boltwork for 1- or 2-lock operation
- No predefined operation sequence

Features

- Additional protection against tampering by single-pane safety glass panel
- If ingress is attempted, emergency hammers destroy the pane of safety glass and the relockers are activated
- Up to 10 relockers available
- Lock and square nut secured against jimmying
- Main and vertical shafts designed for M10 screws
- 3 fixing points for the switching contacts per lock
- Ease of assembly and mounting and low weight

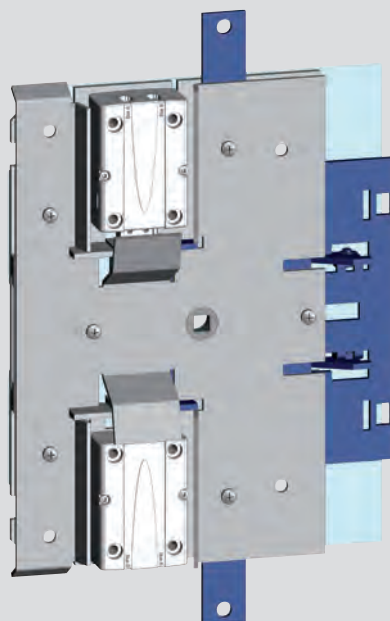
Technical characteristics	7637-002-0	Options
Installation dimensions, closed (mm)	566 x 283	
Fixing	screwed	
Blocking	3-sided	1-sided
Stroke - main shaft/vertical shafts (mm)	26/26	35/35
Square nut (mm)	11	8
Hinges at	right	left
Locking block - number	1	2
Lock - number	1/2	
Lock - footprint	standard	
Lock - fixing	M6	
Weight (kg)	6.9	
Protection against tampering		
Safety glass panel required	•	
Relocker - number	4	6/8/10

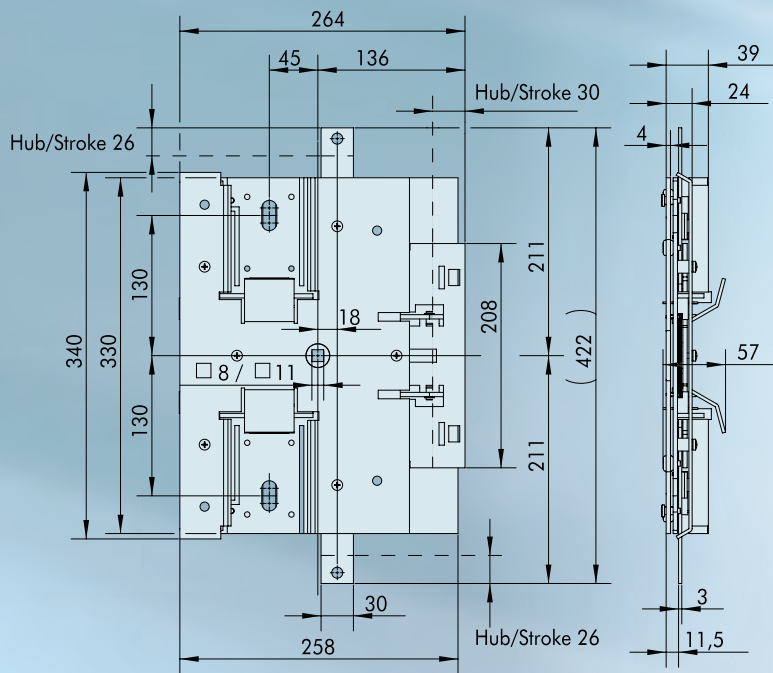
Boltwork 7638



■ Application range

- High-quality inside safes
- ATMs
- Cash recyclers
- Safes in compact design and vault doors up to resistance grade EN 1143-1 grade IV





View of inside of door M 1:7

Characteristics

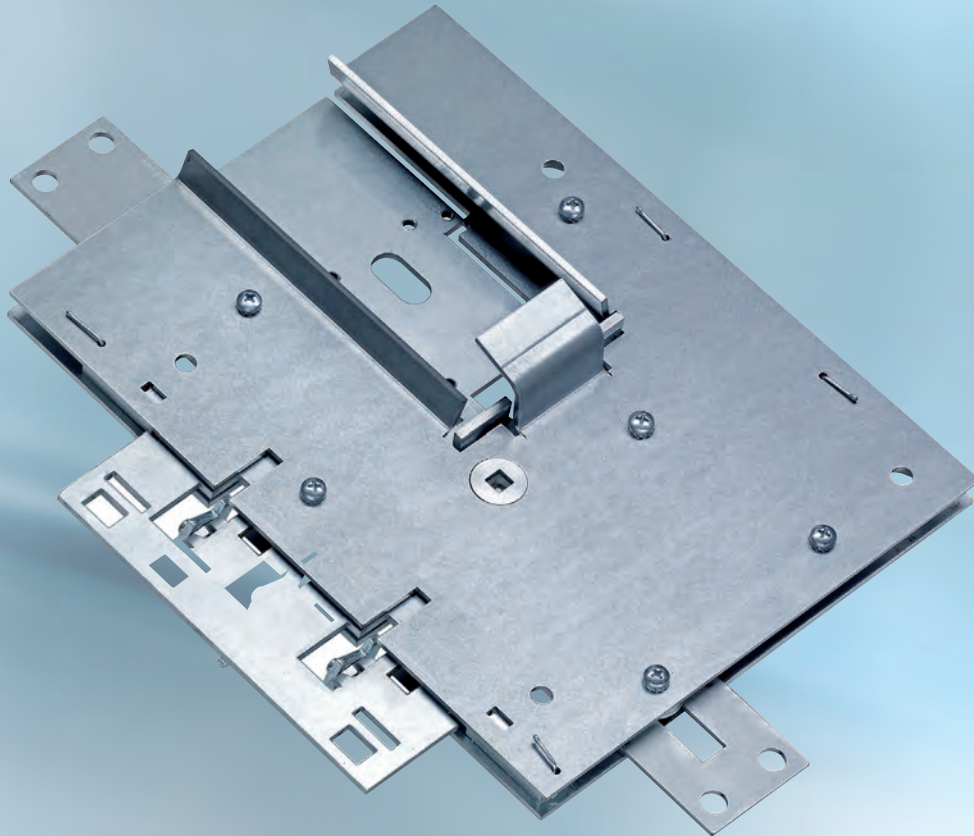
- 1-sided or 3-sided boltwork for 1- or 2-lock operation
- No predefined operation sequence

Features

- Additional protection against tampering by single-pane safety glass panel and 4 relockers
- If ingress is attempted, emergency hammers destroy the pane of safety glass and the relockers are activated
- Lock and square nut secured against prying
- Main and vertical shafts designed for M10 screws
- Ease of assembly and mounting and low weight

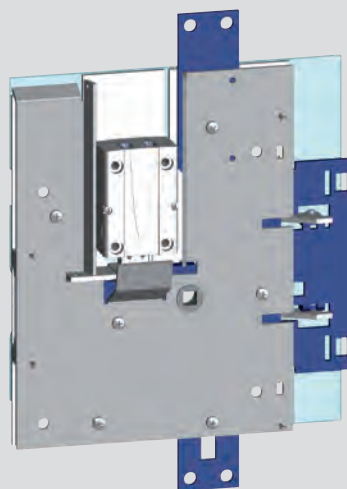
Technical characteristics	7638-000-0	Options
Installation dimensions, closed (mm)	422 x 264	
Fixing	screwed	
Blocking	3-sided	1-sided
Stroke - main shaft/vertical shafts (mm)	30/26	
Square nut (mm)	11	8
Hinges at	right	
Locking block - number	1	2
Lock - number	1/2	
Lock - footprint	standard	
Lock - fixing	M6	
Weight (kg)	4.7	
Protection against tampering		
Safety glass panel required	•	
Relocker - number	4	

Boltwork 7639



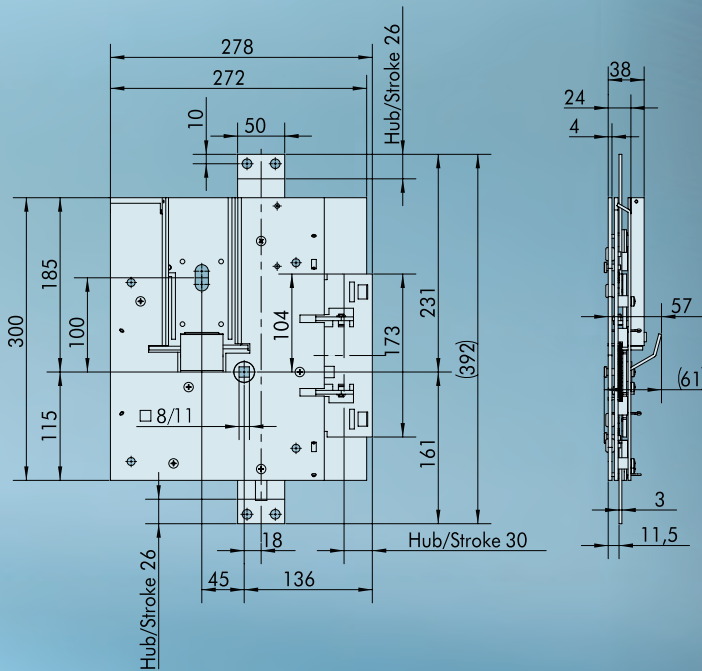
■ Application range

- High-quality inside safes
- ATMs
- Cash recyclers
- Safes in compact design and vault doors up to resistance grade EN 1143-1 grade III



Boltwork 7639-004-0

Boltwork 7639-004-0



View of inside of door M 1:8

Characteristics

- 1-sided or 3-sided boltwork for single lock operation

Features

- 2 lock positions (top or bottom) selectable
- Additional protection against tampering by single-pane safety glass panel and 4 relockers
- If ingress is attempted, 2 emergency hammers destroy the pane of safety glass and the relockers are activated
- Lock and square nut secured against prying
- Main and vertical shafts designed for M10 screws
- Ease of assembly and mounting and low weight

Technical characteristics	7639-004-0	Options
Installation dimensions, closed (mm)	392 x 274	
Fixing	screwed	
Blocking	3-sided	1-sided
Stroke - main shaft/vertical shafts (mm)	30/26	26/26
Square nut (mm)	11	8
Hinges at	right	
Lock - number	1	
Lock - position	top	
Lock - footprint	standard	
Lock - fixing	M6	
Weight (kg)	4.8	
Protection against tampering		
Safety glass panel required	•	
Relocker - number	4	